

STAINLESS STEEL EXPANSION JOINT

HINGED

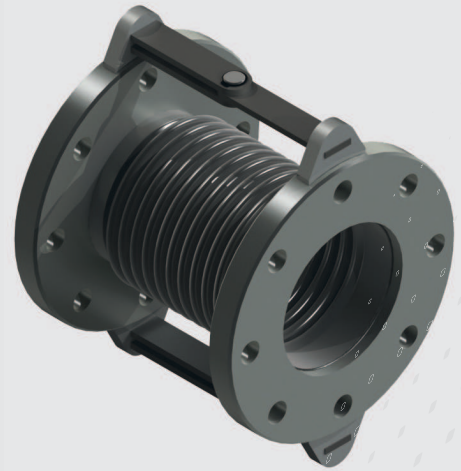
PRODUCT SHEET

> DESCRIPTION

The hinged expansion joint is a standard angular expansion joint equipped with a construction with a hinge point construction built around it so it can only absorb angular movements in one direction. All other movement is eliminated by the construction.

This configuration is equipped with fixed flanges. Pipe-end configurations can also be built on request.

This configuration ensures that the forces of the pressure inside the bellow are retained by the hinge construction.



> KEY FEATURES

- Absorbs angular movements in one direction
- Pressure thrust is retained

> MATERIAL PROPERTIES

Standard grade of bellow is AISI 316. Flanges are made out of standard carbon steel with corrosion protection for fixed flanges. On request stainless steel flanges are also available. Pipe-ends and bund rings are manufactured in AISI 316 grade. The additional construction of the threaded rods are possible in paint coated steel and stainless steel.

> MOVEMENT TABLE

Axial	Lateral	Angular	
O	Single plane	O	Single plane X
	Multi-plane	O	Multi-plane O

This table will indicate the possible movements for each type of expansion joint

X= suitable for movement
O= not suitable for movements

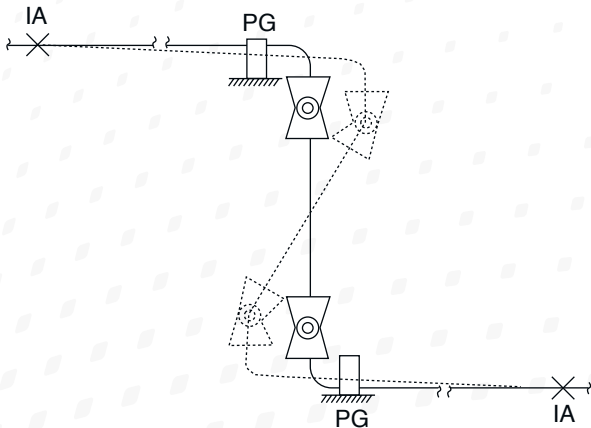
> STANDARD

The bellow is designed according to the most recent EJMA standards. Assembly is done according to EN 14917 / ISO 15348. Assemblies are possible with welding ends (ASME B36.10), flanges according to European standard (EN 1092-1) or ANSI standard (ASME B16.5). Flanges according to JIS standard (JIS B2220) are also possible on request.

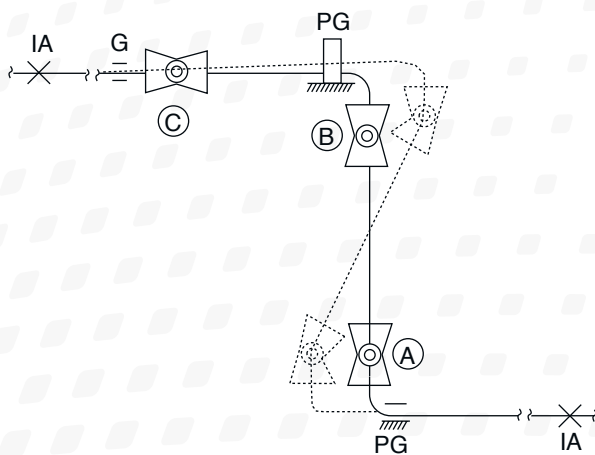
STAINLESS STEEL EXPANSION JOINT

HINGED

> TYPICAL APPLICATIONS



Angular expansion joints are often used in pairs to absorb a linear deflection. The pipes are fixed in the intermediate anchor (IA) and kept in plane in the guider (PG).



In the first drawing the pipes are bent. In case this is to be avoided it can be solved by adding a third angular expansion joint in the system.

> POSSIBLE ACCESSORIES

- Liner
- Heat protection sleeve
- PTFE lining

All options are explained in detail on page 125-128