

PTFE EXPANSION JOINT

PTFE T3

Expansion joint with loose flanges, carbon steel painted.

STANDARD

ASTM D-4895

Flanges: EN 1092-1

MATERIAL

Bellow: white PTFE

Flanges: carbon steel

OTHER SPECIFICATIONS

Pressure class bellow: see pressure resistance table

Flange pattern: DN15-40:PN40

DN50-150: PN16

DN200-500: PN10

ALSO AVAILABLE

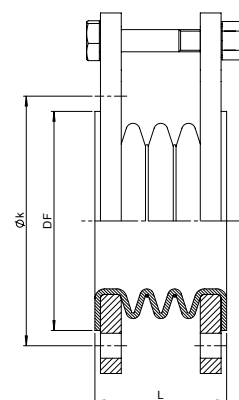
Stainless steel flanges

Flanges acc. ASME B16.5

Antistatic (black) PTFE

POSSIBLE ACCESSORIES

■ Always equipped with limiters



TECHNICAL DATA

PTFE T3 EXPANSION JOINT	CODE	DN	L mm	DF mm	$\varnothing k$ mm	NOC -	Movements			Eff. A cm ²	Spring rate ax. N/mm
							\pm ax mm	\pm lat mm	\pm ang °		
							KPM015	15	70		
KPM020	20	70	58	75	3	10	6	6	24	18	
KPM025	25	70	68	85	3	10	6	6	24	18	
KPM032	32	75	78	100	3	10	6	6	33	38	
KPM040	40	80	88	110	3	15	6	6	40	44	
KPM050	50	85	102	125	3	15	9	9	55	57	
KPM065	65	100	122	145	3	20	9	9	85	81	
KPM080	80	110	138	160	3	20	13	13	113	98	
KPM100	100	110	158	180	3	25	13	13	158	107	
KPM125	125	120	188	210	3	25	14	14	222	118	
KPM150	150	130	212	240	3	25	14	14	299	112	
KPM200	200	140	268	295	3	30	14	14	483	123	
KPM250	250	165	320	350	3	30	14	14	731	116	
KPM300	300	175	378	400	3	30	15	15	973	107	

PRESSURE RESISTANCE TABLE (3-5 CONVOLUTIONS)

TEMPERATURE	PRESSURE DN15-DN100	PRESSURE DN125-250
20°C	10	10
50°C	9,6	8,6
100°C	8,6	7
125°C	7,2	5,3
150°C	5,8	3,9
175°C	4,5	2,7
200°C	3,2	1,7
225°C	1,5	0,5
250°C	0,5	0,2